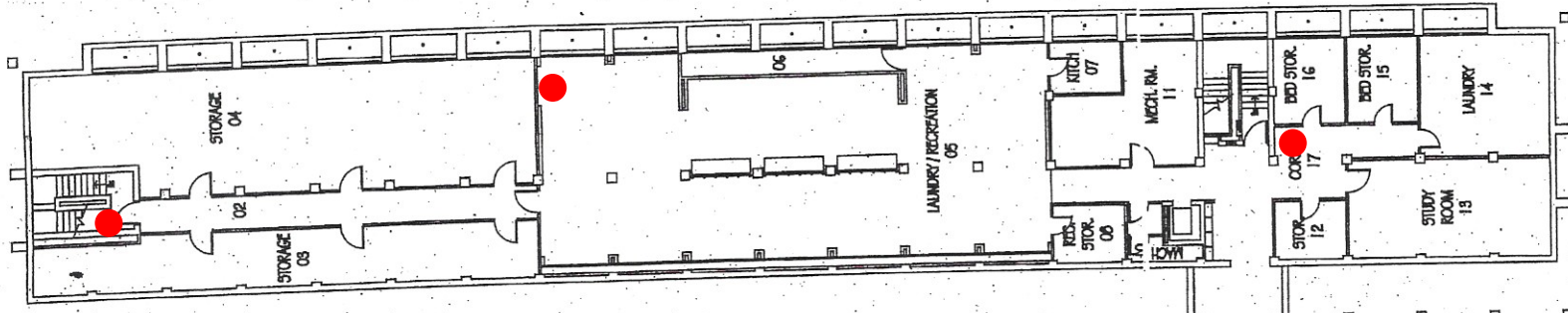
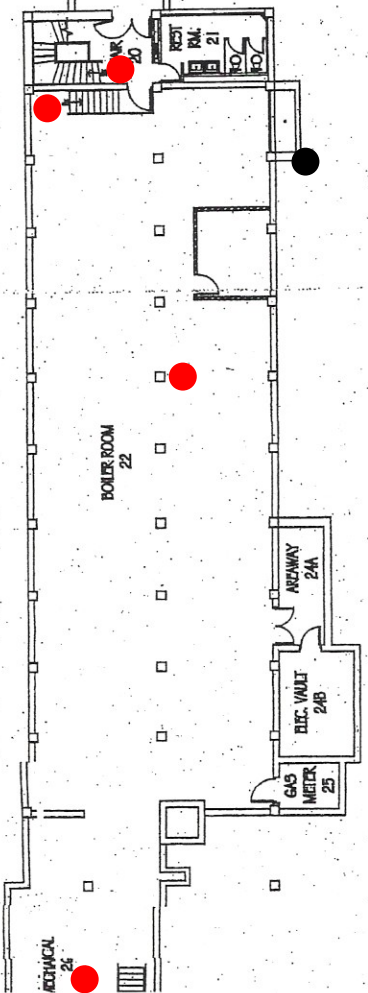


Kirk Hall
1215 30th Street

Fire Extinguisher: 20 Total



KIRK SOUTH



KIRK NORTH
BOILER ROOM LEVEL

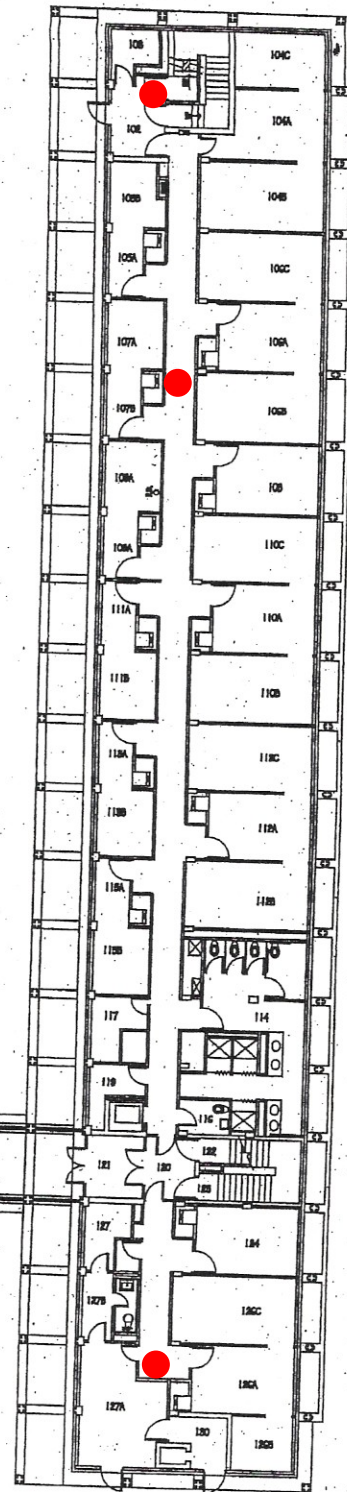
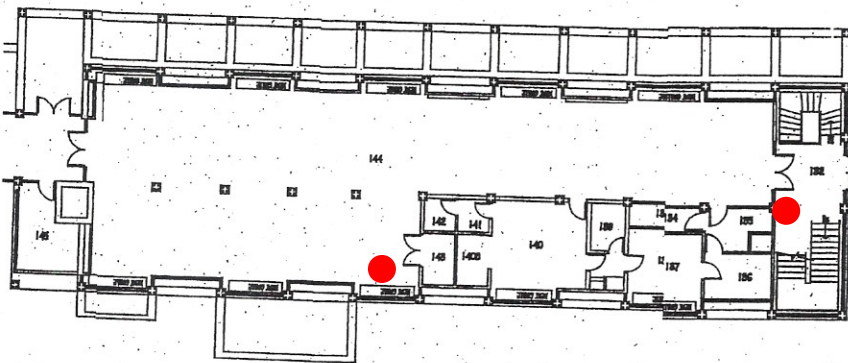
GCODWIN SOUTH

DRAKE UNIVERSITY

SOUTH

KIRK SOUTH

KIRK NORTH



DRAKE UNIVERSITY
GOODWIN - KIRK
DORMITORY COMPLEX

DRAKE UNIVERSITY OFFICE OF DIRECTOR OF PHYSICS DES MOINES, IOWA		
GOODWIN - KIRK, DORMITORY ROOM NUMBERING		
DATE:	11-01	SHEET 2
DRAWN BY:	P.H.M.	JOB NO.:

202
Between

841, 841, 441

843, 843, 443

845, 845, 445

847, 847, 447

GOODWIN SOUTH

849, 849, 449

851, 851, 451

KIRK NORTH

853, 853, 453

855, 855, 455

857, 857, 457

802, 802, 402

804, 804, 404

806, 806, 406

808, 808, 408

810, 810, 410

812, 812, 412

814, 814, 414

816, 816, 416

818, 818, 418

820, 820, 420

204 =

206 =

208 =

210 =

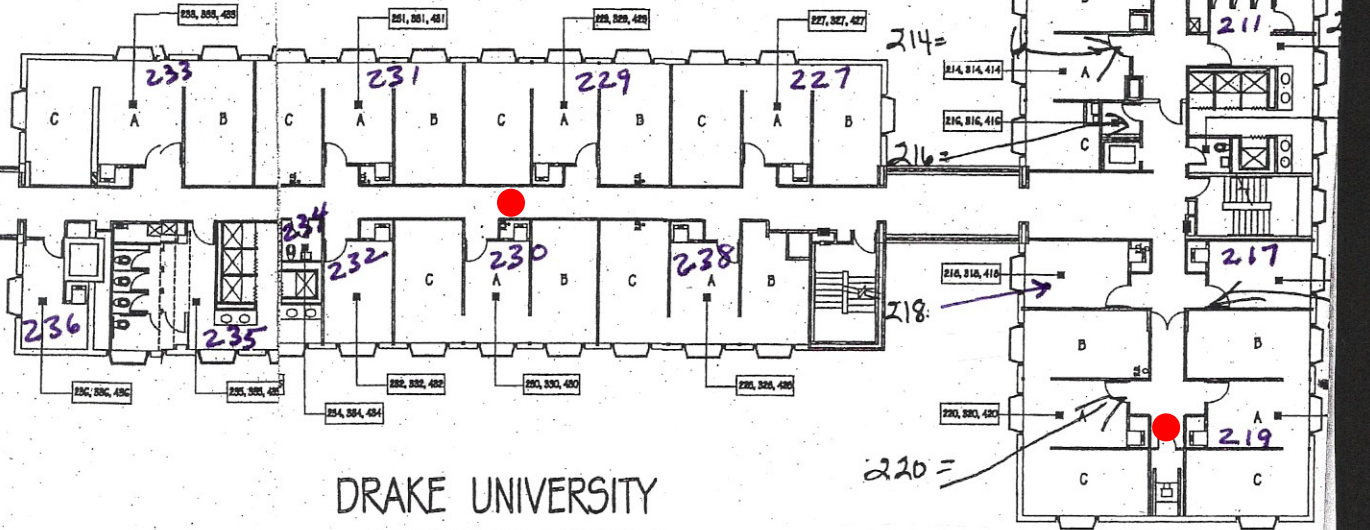
212 =

214 =

216 =

218 =

220 =



DRAKE UNIVERSITY
GOODWIN - KIRK
DORMITORY COMPLEX

241, 241, 441

243, 243, 443

245, 245, 445

247, 247, 447

GOODWIN SOUTH

249, 249, 449

251, 251, 451

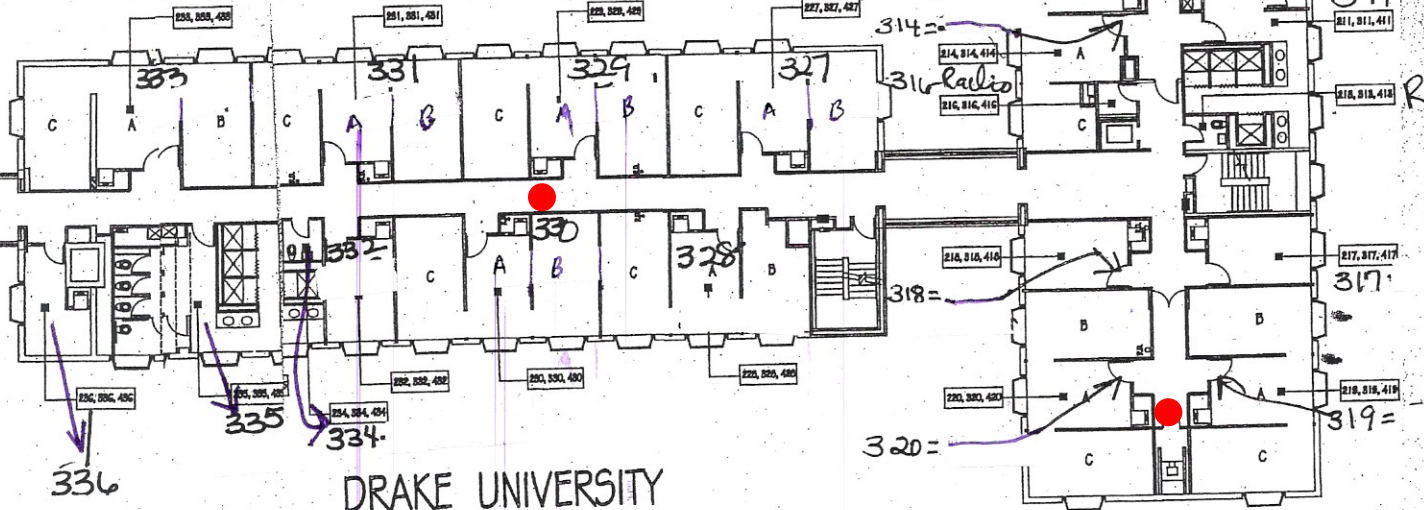
KIRK NORTH

253, 253, 453

255, 255, 455

257, 257, 457

Bathroom



DRAKE UNIVERSITY
 GOODWIN - KIRK
 DORMITORY COMPLEX

341, 341, 441

343, 343, 443

345, 345, 445

347, 347, 447

GOODWIN SOUTH

349, 349, 449

351, 351, 451

KIRK NORTH

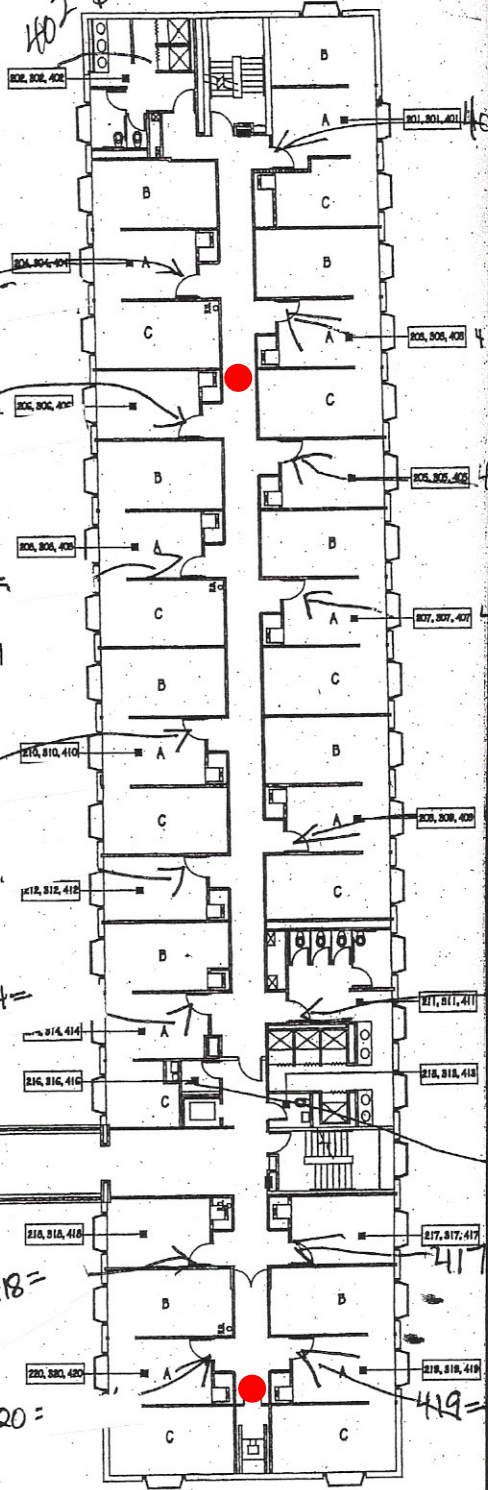
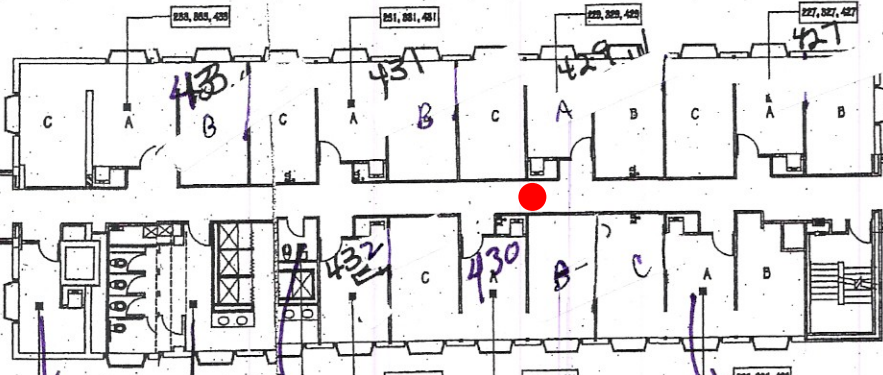
KIRK SOUTH

402 bathroom

353, 353, 453

355, 355, 455

357, 357, 457



DRAKE UNIVERSITY
 GOODWIN - KIRK
 DORMITORY COMPLEX